

# THERMAL & ACOUSTICAL SPRAY-APPLIED FINISHES

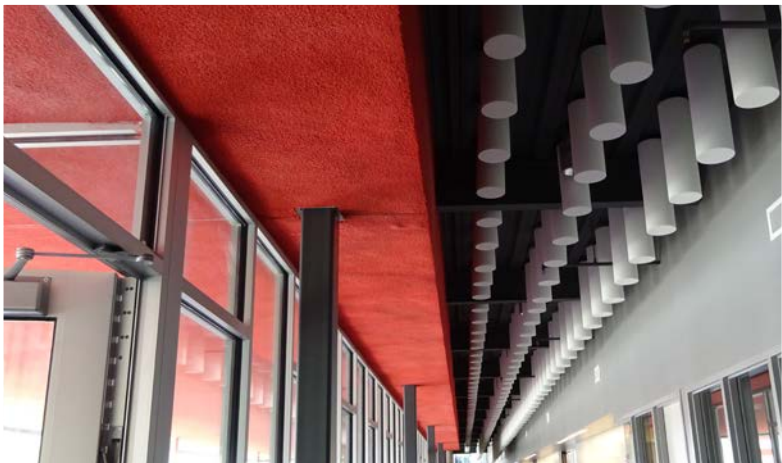


# OPEN OFFICE

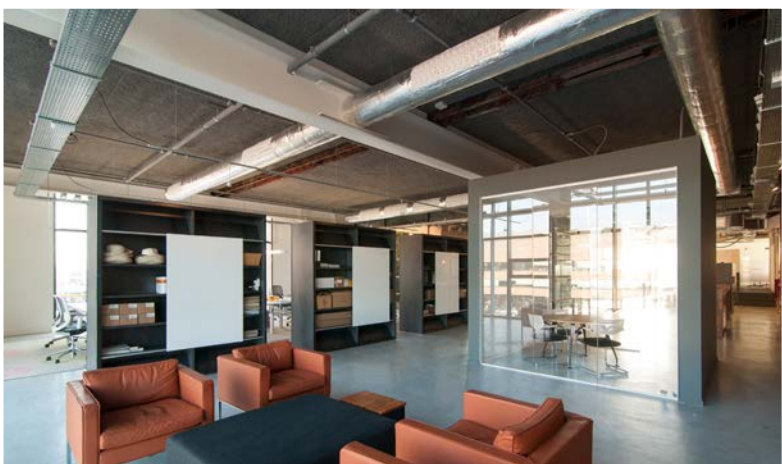
INTERNATIONAL CELLULOSE CORPORATION | (800) 444-1252

[WWW.SPRAY-ON.COM](http://WWW.SPRAY-ON.COM)

# THERMAL & ACOUSTICAL SOLUTIONS OPEN-OFFICE



KATHERINE FLETCHER CENTER - GIRLS INC. - OMAHA, NEBRASKA, USA | SonaKrete - Custom Color



PERNOD RICARD - AMSTERDAM, THE NETHERLANDS | K-13 Gray | 7,750 sf



HNK DEN BOSCH - APeldoorn, THE NETHERLANDS | K-13 Gray

Workplace acoustics is often one of the most overlooked aspects of the design process and can be a cause for major disappointment. The hard surfaces often present in these modern projects reflect sound, causing noisy reverberation and creating possible health and safety issues, along with declined worker productivity. Acoustic consideration is necessary to use any space adequately but is vital for a workplace project.

## CLASS A, CLASS 1

International Cellulose Corporation manufactures Class A, Class 1 Fire-Rated thermal and acoustical treatments in varying finishes to combat noise present in open-office spaces. Our products are also approved to go over fireproofing.

## CUSTOM COLORS

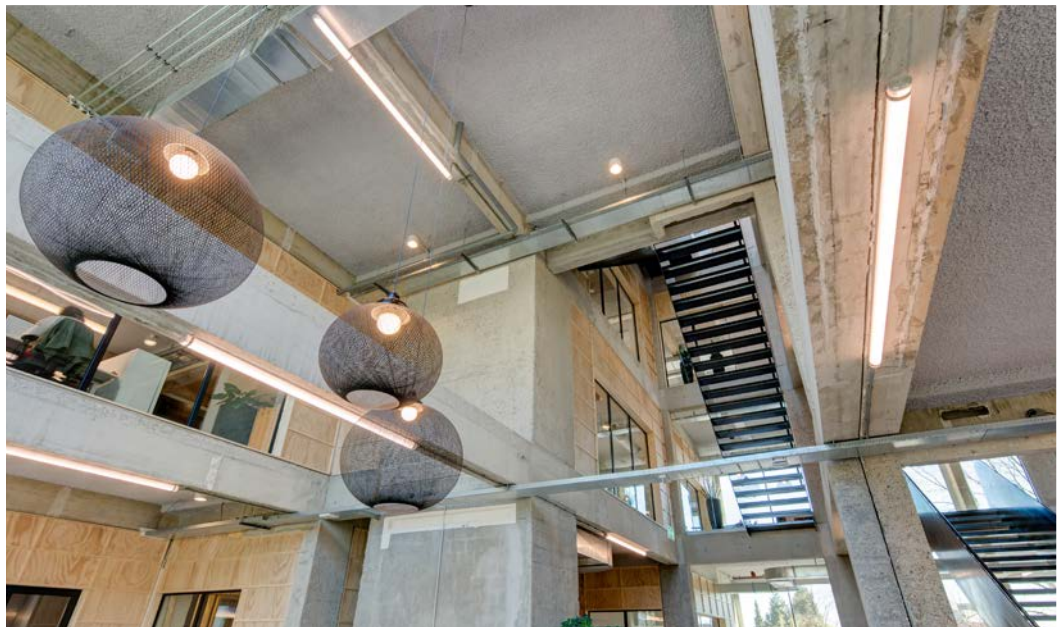
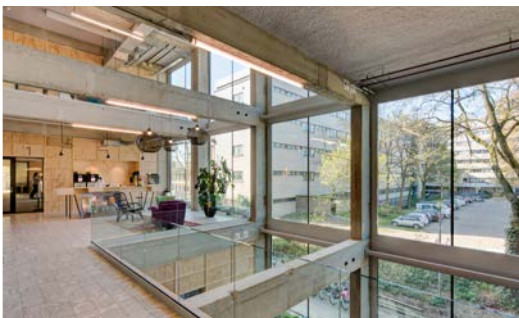
Our cellulose-based exposed finishes are spray-applied and conform to virtually any properly prepared substrate. They are the perfect solution for metal decking, concrete, and complex configurations. Though standard colors are available, all of our acoustical and thermal finishes are available in custom colors.

## SUSTAINABLE

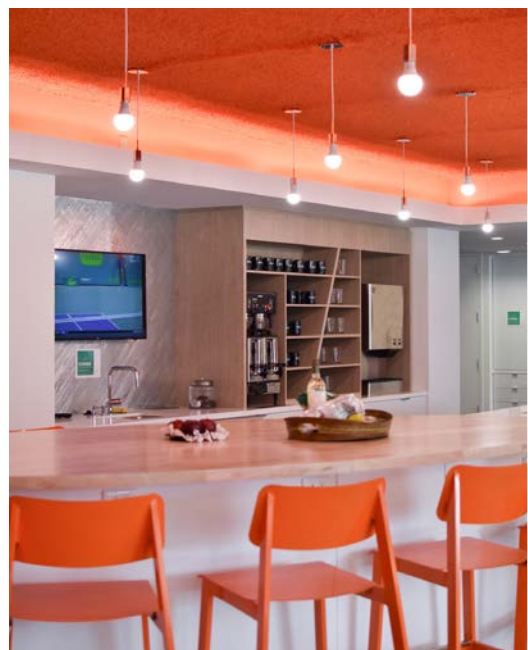
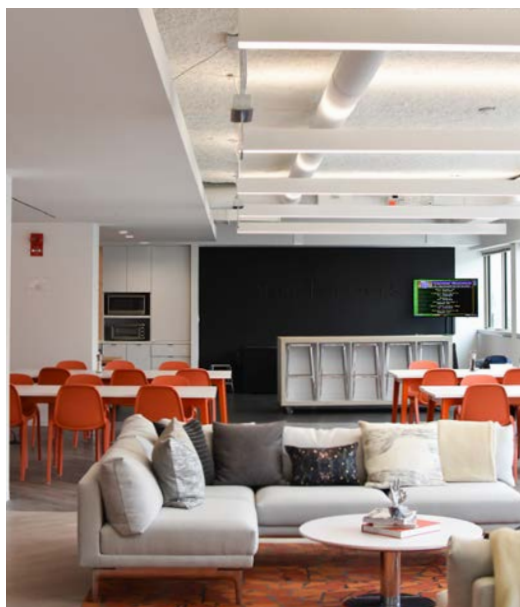
Additionally, our products are sustainable. We manufacture our finishes from 80% recycled material and may contribute to satisfying credits under the LEED® green building program. Our products are UL GREENGUARD Gold certified, and Factory Mutual Approved.

## EXPERIENCE

With over 60 years in the industry, the open office projects highlighted in this brochure are just a small example of the many types of projects that have benefited from the acoustical and thermal finishes offered by International Cellulose. No matter what your design requirements and budget constraints are, for new construction or renovation, our products can be customized to help you create the ideal space.



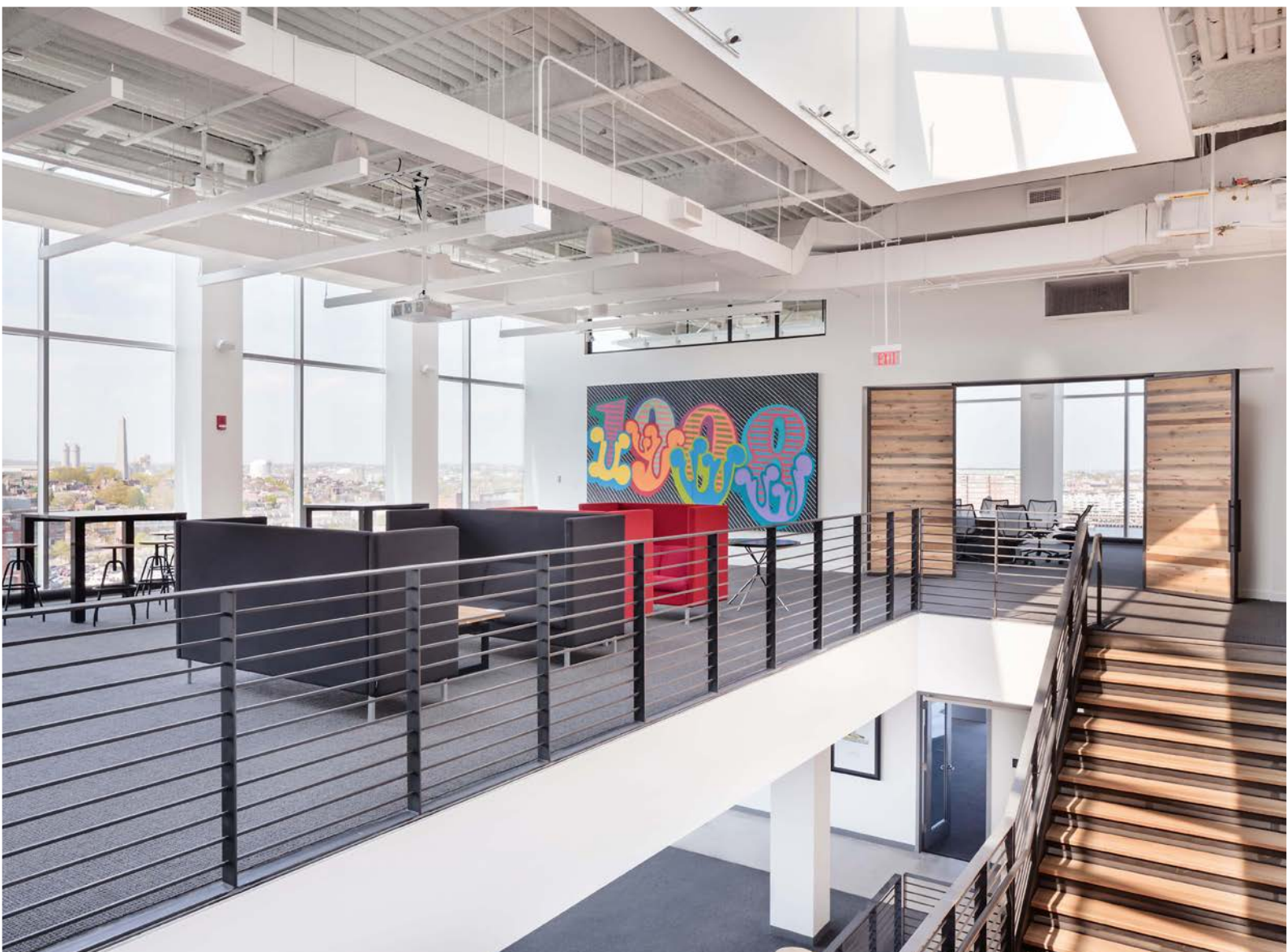
ALLIANCE HILVERSUM - REPURPOSE - HILVERSUM, THE NETHERLANDS | K-13 Custom Colors | 21,500 sf - 1" Thick



MAKE OFFICES - GLOVER PARK - WASHINGTON D.C., USA | K-13 White & K-13 Custom Color Orange



SVOE MNENIE BRANDING AGENCY - MOSCOW, RUSSIA | SonaSpray "fc" White



**CONTACT US  
FOR MORE INFORMATION**

International Cellulose Corporation  
800 444 1252  
[www.spray-on.com](http://www.spray-on.com)